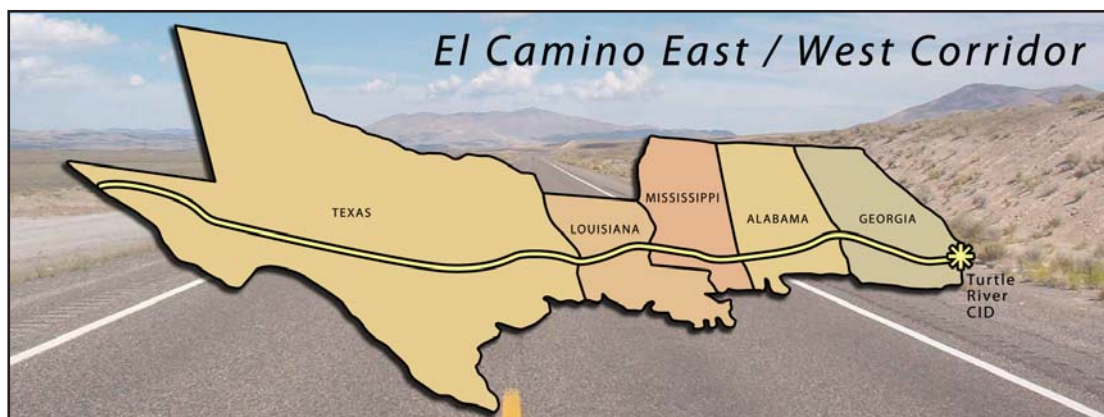
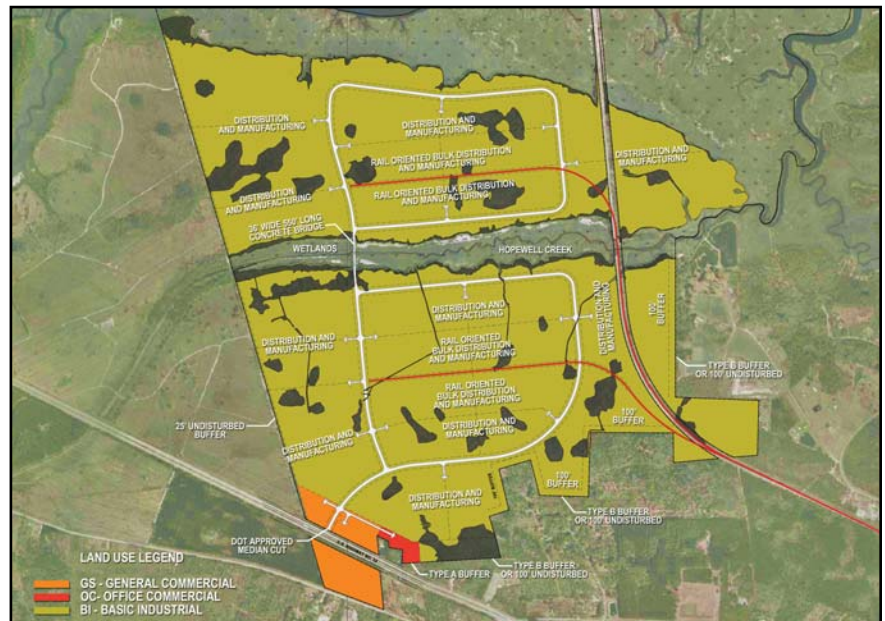


Turtle River

GLOBAL LOGISTICS PARK

Turtle River Global Logistics Park is a rail-served park with direct access to the bulk port in Brunswick, Georgia. With 850 acres of available land, on Highway 82 the park provides easy access via the Golden Isles Railroad to both Class I railroads CSX and Norfolk Southern.

- **Water, sewer and natural gas available**
- **Rail-served sites range in size from 20-100 acres**
- **Other sites range from 10-100 acres**
- **Protective Covenants**
- **Four miles west of I-95**
- **6 miles by rail Northwest of the Port of Brunswick**
- **5.5 miles by road to the Port of Brunswick**
- **Connects to five states and reaches 80% of the U.S. population**



For more information, please contact:

Nathan Sparks, Executive Director
Brunswick and Glynn County Development Authority
4 Glynn Avenue, Brunswick, Georgia 31520
877-265-6629 | 912-265-6629
www.georgiasgoldenopportunity.com

Chitra Subbarayan, CCIM - Vice President
Ackerman & Co.
10 Glenlake Pkwy, South Tower, Suite 1000, Atlanta, Georgia 30328
770-913-3914 | 404-643-9533
www.ackermanco.net

Ackerman & Co.
Brokerage | Development | Management | Investment

Brunswick

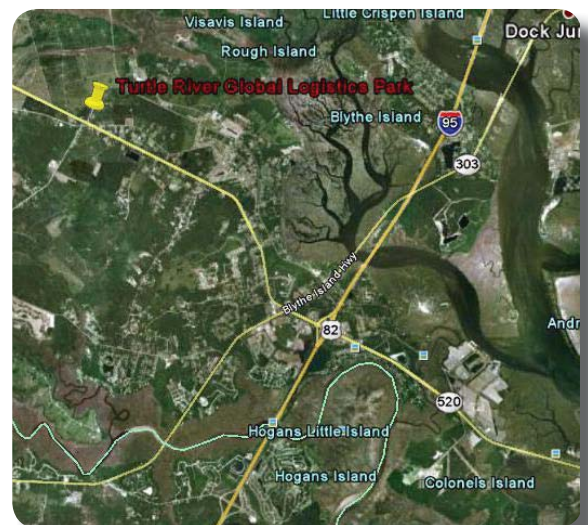
and the Golden Isles of Georgia

Some of the most compelling industrial properties available on the East Coast today are located in Brunswick and Glynn County, Georgia. Whatever your site selection criteria, the Brunswick and Glynn County Development Authority has numerous available sites, buildings and build-to-suit options throughout the area.

Brunswick, Georgia is located on the vital I-95 coastal corridor just an hour's drive from Savannah, GA and Jacksonville, FL.



- *Brunswick's intermodal orientation offers ready access to I-95, trans-Atlantic transportation, major railroads and The Brunswick Golden isles Airport with its 8,000 foot runway*
- *The Sidney Lanier Bridge enhances Georgia's second largest deep water port with close proximity to Savannah and Jacksonville*
- *Healthy regional labor market of over 87,000*
- *Diversified and thriving industrial base including approximately 90 manufacturing firms*
- *Pro-business local government*



For more information, please contact:

Nathan Sparks, Executive Director
Brunswick and Glynn County Development Authority
4 Glynn Avenue, Brunswick, Georgia 31520
877-265-6629 | 912-265-6629
www.georgiasgoldenopportunity.com

Chitra Subbarayan, CCIM - Vice President
Ackerman & Co.

10 Glenlake Pkwy, South Tower, Suite 1000, Atlanta, Georgia 30328
770-913-3914 | 404-643-9533

www.ackermanco.net

Ackerman & Co.
Brokerage | Development | Management | Investment