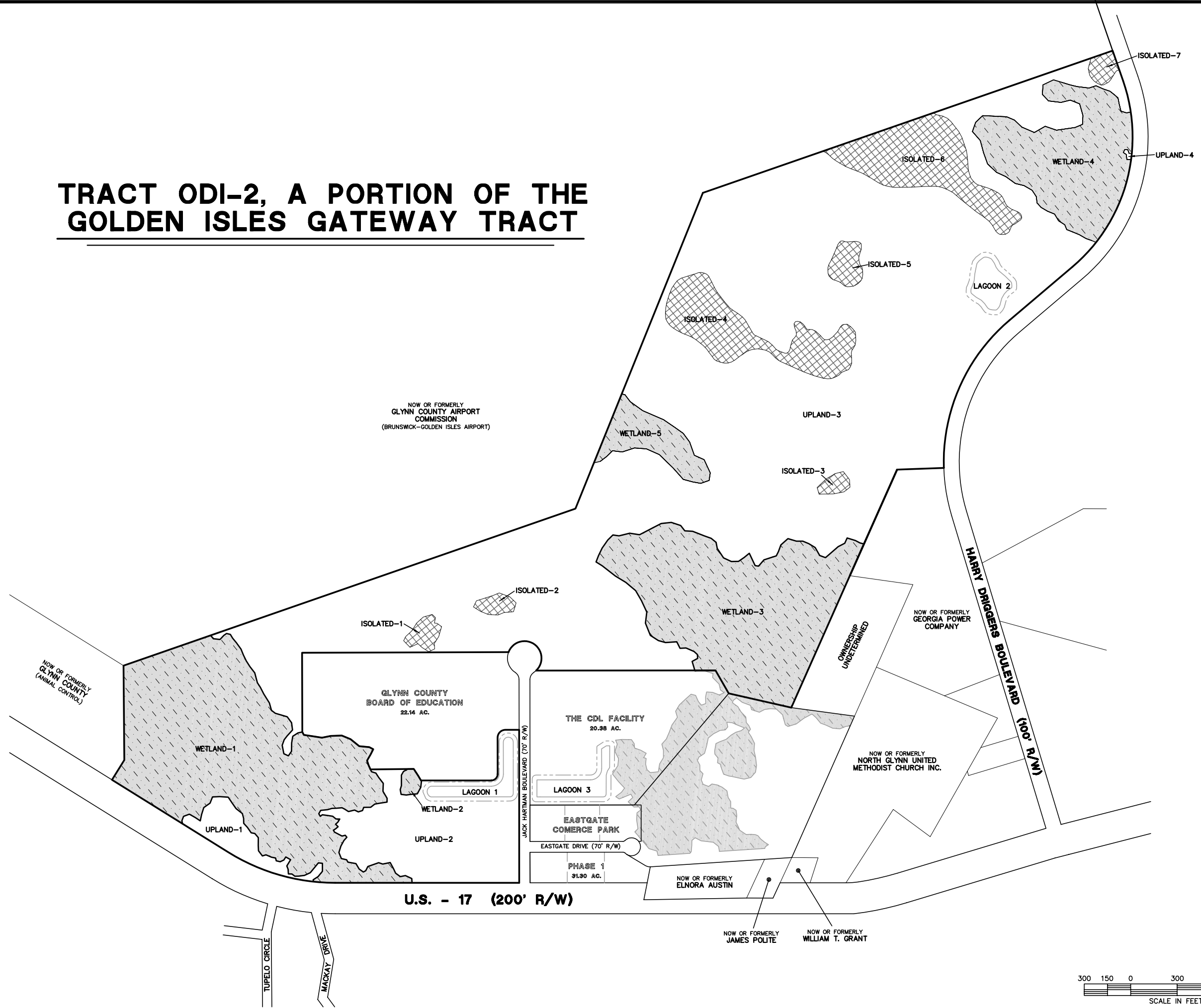


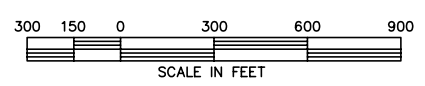
# TRACT ODI-2, A PORTION OF THE GOLDEN ISLES GATEWAY TRACT



ACREAGE CHART	
<b>UPLANDS</b>	<b>165.68 AC.</b>
UPLAND-1	3.21 AC.
UPLAND-2	14.03 AC.
UPLAND-3	148.39 AC.
UPLAND-4	0.05 AC.
<b>JURISDICTIONAL WETLANDS</b>	<b>79.01 AC.</b>
WETLAND-1	35.08 AC.
WETLAND-2	0.42 AC.
WETLAND-3	25.95 AC.
WETLAND-4	13.61 AC.
WETLAND-5	3.95 AC.
<b>ISOLATED WETLANDS</b>	<b>19.56 AC.</b>
ISOLATED-1	0.78 AC.
ISOLATED-2	0.61 AC.
ISOLATED-3	0.48 AC.
ISOLATED-4	7.43 AC.
ISOLATED-5	1.16 AC.
ISOLATED-6	8.42 AC.
ISOLATED-7	0.68 AC.
<b>LAGOON</b>	<b>4.50 AC.</b>
LAGOON-1	2.51 AC.
LAGOON-2	1.99 AC.
LAGOON-3	INCLUDED WITH CDL
<b>RIGHT-OF WAY</b>	<b>4.25 AC.</b>
JACK HARTMAN BLVD	3.04 AC.
EASTGATE DR	1.21 AC.
<b>EASTGATE COMERCE PARK</b>	<b>31.30 AC.</b>
<b>CDL FACILITY</b>	<b>20.38 AC.</b>
<b>GLYNN COUNTY BOARD OF EDUCATION</b>	<b>22.14 AC.</b>
<b>TOTAL</b>	<b>346.82 AC.</b>

**LEGEND:**

	JURISDICTIONAL WETLAND
	ISOLATED NON-JURISDICTIONAL WETLAND



PREPARED FOR:  
**BRUNSWICK-GLYNN COUNTY DEVELOPMENT AUTHORITY**  
 TRACT ODI-2, A PORTION OF THE GOLDEN ISLES GATEWAY TRACT, GLYNN COUNTY, GEORGIA  
 DATE: 9/9/10    SCALE: 1" = 300'    JOB # 09085D

**SHUPE SURVEYING COMPANY, P.C.**  
 3837 DARIEN HWY.  
 BRUNSWICK, GEORGIA 31525  
 912-265-0562    09085D.DWG